

Automation Selection Guide

Table of Contents

Product Selection Guides

22mm Operator Selection Guide	2
22mm Monolithic Operators Selection	3
Safety Operators Selection Guide	4
Additional Operator Options	5
Modular Tower Light Selection Guide	6
Miniature Circuit Breakers Selection Guide	7
Fused Disconnects Selection Guide	8
Unfused Disconnects Selection Guide	9
Relay Selection Guide	10
Direct On Line Motor Control Guide	11
Pin and Sleeve Selection Guide	12
Pin and Sleeve Selection Guide Table	13
ATV320 Machine VFD	14
ATV630 Process VFD	15
ATV930 Process VFD	16
Terminal Block Selection Guide	17
Terminal Block Accessories	18
Multi Connection Terminal Blocks	19
Fuse Terminal Blocks Selection Guide	20
24VDC Power Supply Selection Guide	21
Networking Selection Guide	22
Distributed IO Selection Guide	23
Machine PLC Selection Guide	24
Panel Components Selection Guide	25
Cabinet Infrastructure Selection Guide	26
TEW Control Wire Selection Guide	27

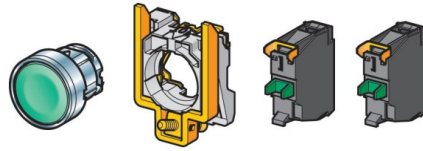
22mm Operator Selection Guide

Push Buttons and Selector Switches

Head	Collar	Contact Blocks
ZB4BA9 (Multicolor Push Button Heads)		
ZB4BD2 (SS 2 Position Stay Put)		
ZB4BD3 (SS 3 Position Stay Put)		
ZB4BD4 (SS 2 Position Spring Return)	→ ZB4BZ009 →	ZBE101 (1NO) ZBE102 (1NC)
ZB4BD5 (SS 3 Position Spring Return)		
ZB4BG2 (Key SS 2 Pos Stay, Left removal)		
ZB4BG4 (Key SS 2 Pos Stay, Any removal)		

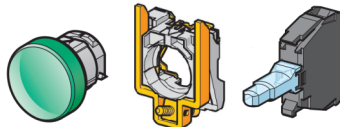


Up to 3 rows of 3 contacts each can be assembled



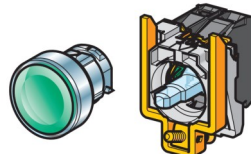
Pilot lights

Head	Collar	Light Blocks
ZB4BV033 (Green Head)		
ZB4BV043 (Red Head)		
ZB4BV063 (Blue Head)	→ ZB4BZ009 →	ZBVG1 (120VAC) ZBVB1 (24VAC/DC)
ZB4BV013 (White Head)		
ZB4BV053 (Orange Head)		



Illuminated Push Buttons

Head	Collar	Contact and Light Blocks
ZB4BW333 (Green Illuminated Head)	→ ZB4BZ009 →	ZBE101 , ZBE102
ZB4BW343 (Red Illuminated Head)		ZBVG1 , ZBVB1



Wireless Operator Kit

Part Number	Description
XB4RFA02	Wireless kit. Includes 1 full pushbutton with multicolor head and receiver.

22mm Monolithic Operators Selection

Push Buttons and Selector Switches

Part Number	Description	Contacts
XB7NA15	White Monolithic Push Button	NO/NC
XB7NA25	Black Monolithic Push Button	NO/NC
XB7NA35	Green Monolithic Push Button	NO/NC
XB7NA45	Red Monolithic Push Button	NO/NC
XB7NA65	Blue Monolithic Push Button	NO/NC
XB7NA85	Yellow Monolithic Push Button	NO/NC
XB7ND25	2 Position Selector Switch	NO/NC
XB7ND33	3 Position Selector Switch	2 NO



Pilot Lights and Signaling

Part Number	Description	Voltage
XB7EV03BP	Green Monolithic Pilot Light	24 AC/DC
XB7EV03GP	Green Monolithic Pilot Light	120 VAC
XB7EV04BP	Red Monolithic Pilot Light	24 AC/DC
XB7EV04GP	Red Monolithic Pilot Light	120 VAC
XB7EV05BP	Yellow Monolithic Pilot Light	24 AC/DC
XB7EV05GP	Yellow Monolithic Pilot Light	120 VAC
XB7EV06BP	Blue Monolithic Pilot Light	24 AC/DC
XB7EV06GP	Blue Monolithic Pilot Light	120 VAC
XB7EV07BP	White Monolithic Pilot Light	24 AC/DC
XB7EV07GP	White Monolithic Pilot Light	120 VAC
XB7EV08BP	Orange Monolithic Pilot Light	24 AC/DC
XB7EV08GP	Orange Monolithic Pilot Light	120 VAC
XB5KS2B4	Red Illuminated Buzzer	24 AC/DC



Illuminated Push Buttons

Part Number	Description	Voltage
XB7NW33B1	Green Monolithic Illuminated Push Button 1NO	24 AC/DC
XB7NW34B1	Red Monolithic Illuminated Push Button 1NO	24 AC/DC
XB7NW36B1	Blue Monolithic Illuminated Push Button 1NO	24 AC/DC
XB7NW35B1	Orange Monolithic Illuminated Push Button 1NO	24 AC/DC



Safety Operators Selection Guide

Mushroom Head Latching Buttons

Mount	Head	Description	Contacts
22mm	ZB4BS844	Turn to Release Mushroom Head	ZBE101 (NO) ZBE102 (NC) ZB4BZ009 (Collar)
22mm	XB7NS8444	Turn to Release Monolithic Mushroom button	2NC Included
30mm	9001KR16	Turn to Release Mushroom Head	9001KA1 (1NO/1NC) 9001KA2 (1NO)
30mm	9001KR9R	Push-Pull Mushroom Head	9001KA3 (1NC)



Emergency Stop Legends

Mounting	Part Number	Description
22mm	ZBY9W2B330	Illuminated "EMERGENCY STOP" Legend, 24V AC/DC
22mm	ZBY9W2G330	Illuminated "EMERGENCY STOP" Legend, 120VAC
22mm	ZBY9320	"EMERGENCY STOP" Legend
30mm	9001KN8330	"EMERGENCY STOP" Legend

For buttons that do not have yellow bodies, a yellow backing, such as a legend, is required



To interface with safety circuits, the below Forcibly Guided Relays can be used (Capable of SIL3 and PLe)

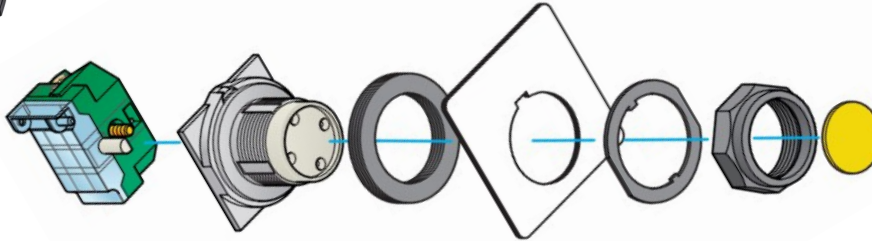
Contacts	Part Number	Description
4NO2NC	2759090000	Complete Relay, 24 VDC, 6A Contact Current
5NO1NC	2860020000	Complete Relay, 24 VDC, 6A Contact Current



Additional Operator Options

30mm Push Buttons and Selector Switches

Head	Contact Blocks
9001KR1U (Multicolor Push Button Heads)	9001KA1 (1NO/1NC)
9001KS11FB (SS 2 Position Stay Put Long)	→ 9001KA2 (1NO)
9001KS53FB (SS 3 Position Stay Put Long)	
9001KR9R (Push-Pull Red Mushroom button)	9001KA3 (1NC)



30mm Pilot lights



Complete Part	Description
9001KP1G31	120 VAC Green Pilot Light
9001KP1R31	120 VAC Red Pilot Light
9001KP1A31	120 VAC Yellow Pilot Light



Operator Enclosures



Part	Operator Size	Hole Count	Description
1554MPB1	22mm	1	Polycarbonate NEMA 4-4X 1-Hole
1554MPB2		2	Polycarbonate NEMA 4-4X 2-Hole
1554MPB3		3	Polycarbonate NEMA 4-4X 3-Hole
1554MPB4		4	Polycarbonate NEMA 4-4X 4-Hole
MPB1	30mm	1	Steel NEMA 12 1-Hole
MPB2		2	Steel NEMA 12 2-Hole
MPB3		3	Steel NEMA 12 3-Hole
MPB4		4	Steel NEMA 12 4-Hole



Modular Tower Light Selection Guide

Signaling Modules

Item	Description
XVUC25	Modular Tower Light Unit Orange
XVUC24	Modular Tower Light Unit Red
XVUC23	Modular Tower Light Unit Green
XVUC26	Modular Tower Light Unit Blue
XVUC9S	Modular Tower Light Buzzer Unit Black (Need either of above)

A max of 5 light units or 4 light units with 1 buzzer can be used



Body Modules

Item	Description
XVUC21M	Modular Tower Light Base Unit 100-240VAC NPN
XVUC21B	Modular Tower Light Core Body 24 VAC/DC



Mounting Bases

Item	Description
XVUZ00	Conduit Adaptor 1/2 NPT
XVUZ01	Modular Tower Light Direct Mounting Plate Black
XVUZ02	Modular Tower Light Aluminum Mtg Plate W/100mm Pole Black
XVUZ03	Modular Tower Mounting Plate 2 Pins Back
XVUZ06	XVU Flexible Mounting Black
XVUZ12	Fixing Plate For Use On Vertical Support
XVUZ100T	Metal Bracket With 100mm Pole Black



Miniature Circuit Breakers Selection Guide

UL489 Branch Rated Breakers

1 Pole

Part Number	Poles	Amperage
2477830000	1	2
2477840000		3
2477850000		4
2477860000		5
2477890000		8
2477900000		10
2477910000		12
2477930000		15
2477950000		20
2477970000		30

2 Pole

Part Number	Poles	Amperage
2478040000	2	1
2478080000		2
2478090000		3
2478110000		5
2478140000		8
2478150000		10
2478180000		15

3 Pole



Part Number	Poles	Amperage
2478360000	3	5
2478400000		10
2478430000		15
2478450000		20
2478470000		30
2478480000		32
2478500000		40
2478510000		50

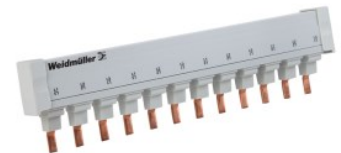


1 Pole units are rated for 277 VAC. 2 and 3 Pole units are rated for 480Y/277 VAC.

Breaker Accessories



Part Number	Description
7940099227	1 NC Auxiliary Contact
7940099236	1 Pole 57 Pin Busbar
7940099238	2 Pole 56 Pin Busbar
7940104509	3 Pole 57 Pin Busbar
7940099232	Busbar Top Feeder Terminal
7940099233	Busbar Bottom Feeder Terminal
7940099230	Busbar Endcap



The busbars are compatible with Weidmuller CC fuse holders. Use the bottom feeder terminal.

Fused Disconnects Selection Guide

GS2 UL98 Fused Disconnect

Part Number	Amperage	Description
GS2EU3N	30A	3 Pole Class J Fused Disconnect Switch
GS2GU3N	60A	
GS2JU3N	100A	
GS2MU3N	200A	
GS2QU3N	400A	



Accessories for the GS2 switch

Part Number	Amperage Range	Description
GS2AE21	30A to 400A	10x10mm Shaft, 400mm Length
GS2AH430	30A to 400A	NEMA 4X, Black Rotary Handle
GS2AH440	30A to 400A	NEMA 4X, Red Rotary Handle
GS2AP43	200A	3 Pole Terminal Shroud
GS1AW403	200A	Terminal Lug Kit, Set of Six
GS1AW603	400A	Terminal Lug Kit, Set of Six
GS2AP53	400A	3 Pole Terminal Shroud



Shrouds are required for the line side terminals



Unfused Disconnects Selection Guide

Enclosed UL508 Motor Disconnects

Part Number	Amperage	Description
MD3304X	30A	NEMA 4X, 25HP at 600 VAC
MD3604X	60A	NEMA 4X, 40HP at 600 VAC
ME 30SLP-M2-MF	30A	Stainless Slope Top, NEMA 4X, 25HP at 600 VAC



VLS Unfused Disconnect Switches

Rail Mounted Disconnect Switches	
UL98	UL508 (Motor Only)
VLS3P030R2 (30A)	VLS3P016R1 (16A)
VLS3P063R2 (60A)	VLS3P025R1 (25A)
VLS3P100R2 (100A)	VLS3P040R1 (40A)

Door Mounted Disconnect Switches	
UL98	UL508 (Motor Only)
VLS3P030D2 (30A)	VLS3P025D1 (25A)



Recessed

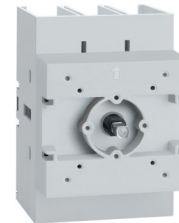


Not to be used with R2 frames (UL98)

5mm Shaft and Handle Options	
Part Number	Description
VLSS3005	300mm length 5mm shaft
VLSH1S5R	Recessed Red Handle Screw Fixing
VLSH1S5B	Recessed Black Handle Screw Fixing
VLSH2S5R	Protruding Red Handle Screw Fixing
VLSH2S5B	Protruding Black Handle Screw Fixing

To be used with R2 frames (UL98)

7mm Shaft and Handle Options	
Part Number	Description
VLSHA7	Handle Adaptor for 7mm shaft (Needed)
VLSS3007N	300mm length 7mm shaft
VLSH3S7NRD	Red Pistol Grip Screw Fixing Defeatable
VLSH3S7NBD	Black Pistol Grip Screw Fixing Defeatable



Protruding



Relay Selection Guide

Single change over

Select the required amperage

6A or less

Greater than 6A

TRS series of slim relays from Weidmuller



Coil Voltage	Part number
120 VAC	1122830000
24 VDC	1122770000

Coil Voltage	Contact Current	Part number	Socket
120 VAC	Up to 15A	RPM12F7	RPZF1
24 VDC		RPM12BD	



2 change over to 4 change over

Use the below Selection table



Changeover	Contact current	Coil Voltage	Part number	Socket
2	10A or less	120 VAC	RXM2AB2F7	RXZE2M114 or
		24 VDC	RXM2AB2BD	RXZE2M114M
	10A to 15A	120 VAC	RPM22F7	RPZF2
		24 VDC	RPM22BD	
4	6A or less	120 VAC	RXM4AB2F7	RXZE2M114 or
		24 VDC	RXM4AB2BD	RXZE2M114M
	6A to 15A	120 VAC	RPM42F7	RPZF4
		24 VDC	RPM42BD	



Alternative 2CO Options



Changeover	Contact current	Coil Voltage	Part number	Socket
2	8A	120 VAC	RSB2A080F7PV	Included
		24 VDC	RSB2A080BDPV	
	10A	120 VAC	RUMC22F7	RUZC2M
		24 VDC	RUMC22BD	



For a slim option, offer RSB. For a more robust option, offer RUM.

We have **force guided relays** too! Weidmuller [2759090000](#) and [2860020000](#)

Direct On Line Motor Control Guide

Contactors

Tesys Deca Series

Amperage	Coil voltage	Part number
0-9A	120 VAC	LC1D09G7
	24 VDC	LC1D09BD
9A-12A	120 VAC	LC1D12G7
	24 VDC	LC1D12BD
12A-18A	120 VAC	LC1D18G7
	24 VDC	LC1D18BD
18A-25A	120 VAC	LC1D25G7
	24 VDC	LC1D25BD
25A-32A	120 VAC	LC1D32G7
	24 VDC	LC1D32BD



Notable Accessories	
Part number	Description
LADN11	1NO + 1NC Front mounted auxiliary contacts
LADN22	2NO + 2NC Front mounted auxiliary contacts
LAD8N11	1NO + 1NC Side mounted auxiliary contacts
LAD9ET1S	Red front cover
LAD9R1V	Reversing contactor kit. Need two contactors.

Motor Circuit Breakers and Overloads

GV2P Series

Amperage	Part number
0.1A - 0.16A	GV2P01
0.16A - 0.25A	GV2P02
0.25A - 0.40A	GV2P03
0.40A - 0.63A	GV2P04
0.63A - 1A	GV2P05
1A - 1.6A	GV2P06
1.6A - 2.5A	GV2P07
2.5A - 4A	GV2P08
4A - 6.3A	GV2P10
6A - 10A	GV2P14
9A - 14A	GV2P16
13A - 18A	GV2P20
17A - 23A	GV2P21
20A - 25A	GV2P22
24A - 32A	GV2P32

LRD Series

Amperage	Part Number
0.10A - 0.16A	LRD01
0.16A - 0.25A	LRD02
0.25A - 0.40A	LRD03
0.40A - 0.63A	LRD04
0.63A - 1A	LRD05
1A - 1.6A	LRD06
1.6A - 2.5A	LRD07
2.5A - 4A	LRD08
4A - 6A	LRD10
5.5A - 8A	LRD12
7A - 10A	LRD14
9A - 13A	LRD16
12A - 18A	LRD21
16A - 24A	LRD22
23A - 32A	LRD32

Notable Accessories	
Part number	Description
GV2AF3	Connect LC1D to GV2P
GVAE11	1NO + 1NC auxiliary contacts
GV2APN01	Extended Rotary Handle Kit
GV1G09	Top supply for busbars
GV2G245	Busbar - 63A - 2 tap-offs
GV2G345	Busbar - 63 A - 3 tap-offs
GV2G445	Busbar - 63A - 4 tap-offs

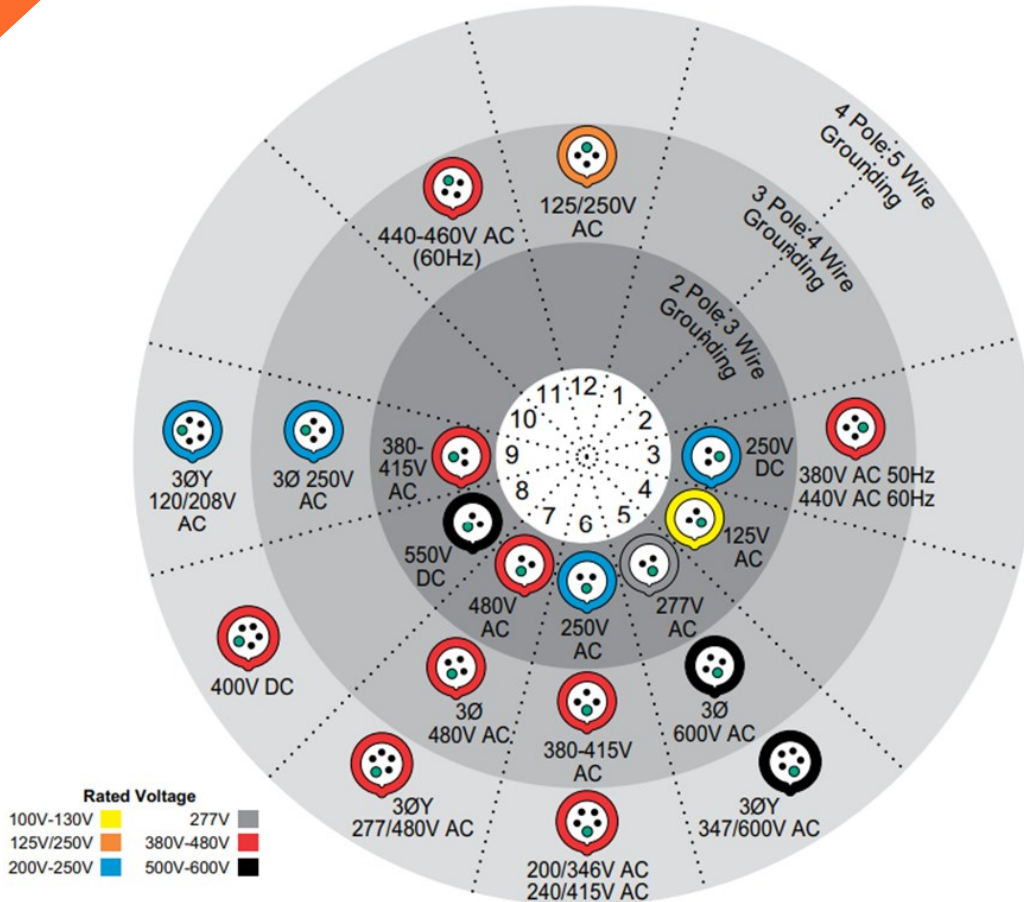


Upstream & downstream protection

Downstream protection

Pin and Sleeve Selection Guide

IEC Device Selection Chart



For North American (IEC 60309 Series II) Devices

3	20	R	6	W
1st digit	2nd-4th digit	Letter	Clock Position	Suffix
3 = 3 wire	20 = 20 Amp	P = Plug	4 = 4 hour	W = Watertight
4 = 4 wire	30 = 30 Amp	C = Connector	5 = 5 hour	
5 = 5 wire	60 = 60 Amp	R = Receptacle	6 = 6 hour	
	100 = 100 Amp	B = Inlet	7 = 7 hour	
		MI = Mechanical Interlock, Non-fused	9 = 9 hour	
		MF = Mechanical Interlock, Fused	12 = 12 hour	

Pin and Sleeve Selection Guide Table

Commonly Stocked Parts

Part Number	Amperage	Voltage	Type	Color
420P9W	20A	250V	Plug	Blue
420C9W			Connector	
420P7W		480V	Plug	Red
420C7W			Connector	
420P5W		600V	Plug	Black
420C5W			Connector	
430C9W	30A	250V	Connector	Blue
430P9W			Plug	
460P9W	60A	250V	Plug	Blue
460C9W			Connector	
460C7W		480V	Connector	Red
460P7W			Plug	
460C5W		600V	Connector	Black
460P5W			Plug	
4100P7W	100A	480V	Plug	Red
4100C7W			Connector	
4100P5W		600V	Plug	Black
4100C5W			Connector	



ATV320 Machine VFD

The ATV320 is a general purpose solution for **all** applications up to 20 HP

ATV320 VFD Models

HP	Part Number			
	240 VAC Single Phase	240 VAC Three Phase	480 VAC Three Phase	600 VAC Three Phase
1	ATV320U07M2C	ATV320U07M3C	ATV320U07N4C	ATV320U07S6C
3	ATV320U22M2C	ATV320U22M3C	ATV320U22N4C	ATV320U22S6C
5	ATV320U75M3C	ATV320U40M3C	ATV320U40N4C	ATV320U40S6C
7.5	ATV320D11M3C	ATV320U55M3C	ATV320U55N4B	ATV320U55S6C
10	ATV320D15M3C	ATV320U75M3C	ATV320U75N4B	ATV320U75S6C
15		ATV320D11M3C	ATV320D11N4B	ATV320D11S6C
20		ATV320D15M3C	ATV320D15N4B	ATV320D15S6C



ATV320 Accessories

Part Number	Description
TCSMCMAM3M002P	VFD Serial to USB Programming Cable
VW3A3600	Accessory Card Module Adapter (Compact Drives Only)
GV2AF5	Connector Between GV2 and ATV320 (Book Drives Only)
VW3A3616	Modbus TCP / Ethernet IP Communications Module
VW3A3627	Profinet Communications Module
VW3A1111	VFD Graphic Display Terminal
VW3A1112	Graphic Terminal Door Mounting Kit
XB5AD912R10K	Complete potentiometer, 22mm, 10K Ohms



ATV630 Process VFD

The ATV630 is an excellent choice for **variable torque** applications such as fans/HVAC, pumping, and oil & gas

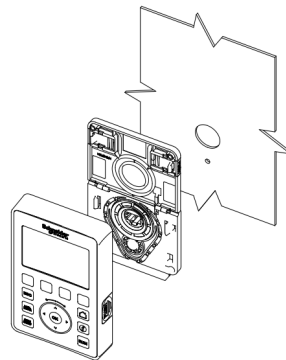
ATV630 VFD Models

HP	Part Number	
	480 VAC Three Phase	600 VAC Three Phase
25	ATV630D18N4	ATV630D18S6
30	ATV630D22N4	ATV630D22S6
40	ATV630D30N4	ATV630D30S6
50	ATV630D37N4	ATV630D37S6
60	ATV630D45N4	ATV630D45S6
75	ATV630D55N4	ATV630D55S6
100	ATV630D75N4	ATV630D75S6



ATV630 Accessories

Part Number	Description
TCSMCMAM3M002P	VFD Serial to USB Programming Cable
VW3A3720	EtherNet/IP and Modbus TCP Comms Module
VW3A3721	EtherNet/IP, Modbus TCP, and MD-Link Comms Module
VW3A3627	Profinet Comms Module
VW3A3725	BACnet MS TP Comms Module
VW3A1112	Graphic Terminal Door Mounting Kit
XB5AD912R10K	Complete potentiometer, 22mm, 10K Ohms



Configuration software SoMove is downloadable [here](#)

ATV930 Process VFD

The ATV930 is an excellent choice for **constant torque** applications such as material handling, hoisting, and conveyors. It can also cover variable torque applications.

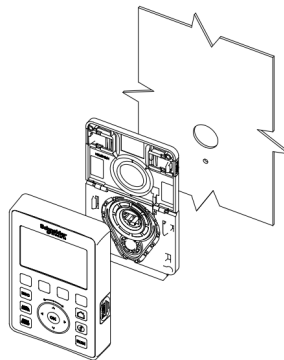
ATV930 VFD Models

HP	Part Number	
	480 VAC Three Phase	600 VAC Three Phase
25	ATV930D18N4	ATV930D18S6
30	ATV930D22N4	ATV930D22S6
40	ATV930D30N4	ATV930D30S6
50	ATV930D37N4	ATV930D37S6
60	ATV930D45N4	ATV930D45S6
75	ATV930D55N4	ATV930D55S6
100	ATV930D75N4	ATV930D75S6



ATV930 Accessories

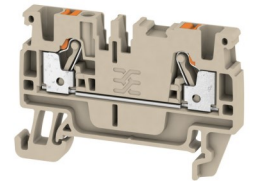
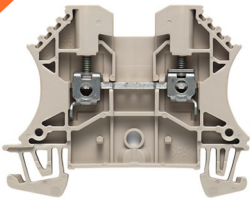
Part Number	Description
TCSMCNAM3M002P	VFD Serial to USB Programming Cable
VW3A3420	Digital Encoder Interface Module
VW3A3422	Analog Interface Module
VW3A3423	Resolver Interface Module
VW3A3424	HTL Encoder Interface Module
VW3A3627	Profinet Comms Module
VW3A1112	Graphic Terminal Door Mounting Kit
XB5AD912R10K	Complete potentiometer, 22mm, 10K Ohms



Terminal Block Selection Guide

2.5mm Standard Terminal Blocks

Color	Screw In W Series	W Series Info	Push in A Series	A Series Info
Beige	1020000000	20A Max 12-26 AWG	1521850000	20A Max 12-28 AWG
Black	1020010000		1521980000	
White	1036800000		1521970000	
Blue	1020080000		1521880000	
Red	1020040000		1521900000	
Brown	1037710000		2508030000	



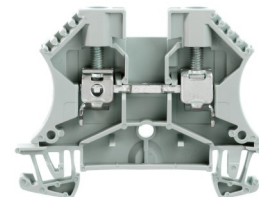
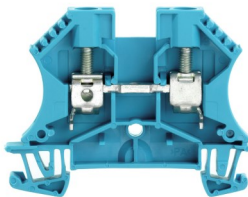
4mm Standard Terminal Blocks

Color	Screw In W Series	W Series Info	Push in A Series	A Series Info
Beige	1020100000	35A Max 10-26 AWG	2051180000	30A Max 10-26 AWG
Black	1020110000		2051310000	
White	1036700000		2051290000	
Blue	1020180000		2051210000	
Red	1020140000		2051220000	
Brown	1037810000		2534370000	



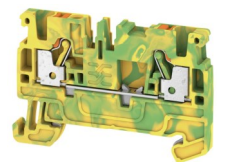
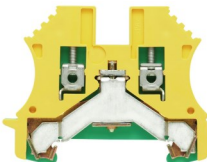
6mm Standard Terminal Blocks

Color	Screw In W Series	W Series Info
Beige	1020200000	50A Max 8-22 AWG
Black	1020210000	
White	1039700000	
Blue	1020280000	
Gray	1039600000	



Ground Terminal Blocks

Width	Screw In W Series	W Series Info	Push in A Series	A Series Info
2.5mm	1010000000	300A 12-26 AWG	1521680000	300A 12-28 AWG
4mm	1010100000	480A 10-26 AWG	2051360000	480A 10-26 AWG
6mm	1010200000	720A 8-20 AWG	1991810000	720A 8-22 AWG

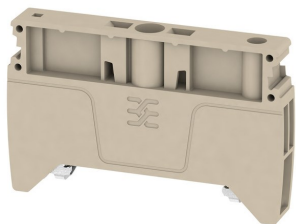


Terminal Block Accessories

Terminal Block Jumpers

Part Number	Pitch	Poles	Color
1985580000	1.5mm	10	Orange
1985680000		10	Blue
1985800000		10	Red
1527540000	2.5mm	2	Orange
1527590000		4	Orange
1527730000		50	Orange
1908960000		20	Yellow
1697540000		50	Yellow
1527880000		10	Blue
2108910000		10	Red
1528090000	4mm	10	Orange
1528130000		50	Orange
1609030000		10	Yellow
1909010000		20	Yellow
1528230000		10	Blue

Terminal End Plates, End Brackets, and More



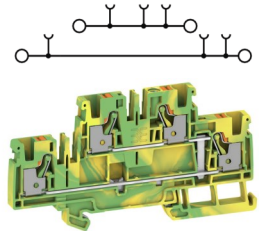
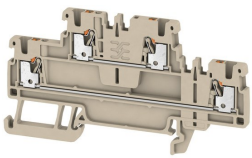
Description	Screw In W Series	Push in A Series
End Bracket	1061200000	1991920000
End Plate (2.5mm)	1050000000	1514400000
End Plate (4mm)		2051680000
Partition Plate	1058800000	



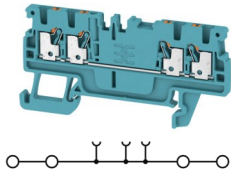
Multi Connection Terminal Blocks

Push in Terminal Blocks

Color	Part Number	Width	Description (2 Circuits)	End Plate
Beige	2469370000	1.5	2 Tier 1.5mm Beige	2540000000
Beige	1547610000	2.5	2 Tier 2.5mm Beige	
Blue	1547620000		2 Tier 2.5mm Blue	
Red	2744240000		2 Tier 2.5mm Red	
Ground	1547680000		2 Tier 2.5mm Ground	
Beige	2539970000	4	2 Tier 4mm Beige	
Ground	2539990000		2 Tier 4mm Ground	

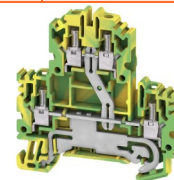
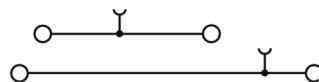


Color	Part Number	Width	Description (Single Circuit)	End Plate
Beige	1552690000	1.5	1 Tier 1.5mm Beige	1552640000
Blue	1552700000		1 Tier 1.5mm Blue	
Ground	1552660000		1 Tier 1.5mm Ground	
Beige	1521690000	2.5	1 Tier 2.5mm Beige	1521530000
Blue	1521700000		1 Tier 2.5mm Blue	
Ground	1521540000		1 Tier 2.5mm Ground	
Beige	2051500000	4	1 Tier 4mm Beige	2051900000
Blue	2051520000		1 Tier 4mm Blue	
Ground	2051560000		1 Tier 4mm Ground	



Screw in Terminal Blocks

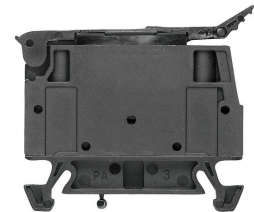
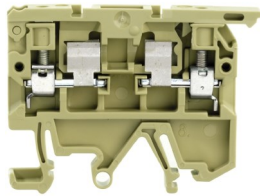
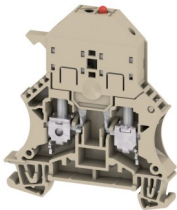
Color	Screw In W Series	Width	Description (2 Circuits)	End Plate
Beige	1041600000	2.5	2 Tier 2.5mm Beige	1084000000
Beige	1021500000		2 Tier 2.5mm Beige (Screw in jumper)	
Blue	1041680000		2 Tier 2.5mm Blue	
Ground	1041620000	4	2 Tier 2.5mm Ground	1059100000
Beige	1041900000		2 Tier 4mm Beige	
Blue	1041980000		2 Tier 4mm Blue	
Red	1068080000		2 Tier 4mm Red	
Ground	1041920000		2 Tier 4mm Ground	



Fuse Terminal Blocks Selection Guide

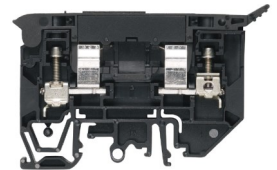
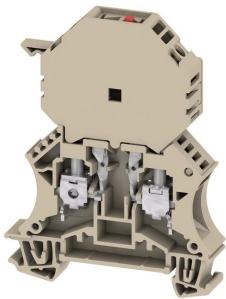
5x20 Fuse Holders

Part Number	Voltage Range	Fuse	Description	End Plate
1011300001	10-36V DC/AC	5 x 20	WSI 6/LD	1050000000
1012200001	30-70V DC/AC			
1012300001	60-150V DC/AC			
1012400001	250AC		ASK 1/EN	0380360000
0222760001	24VDC		AFS 4 2C	2051720000
2434380000	60-150V		WSI 4/LD	Not Needed
1886550000	140-250V AC/DC			



1/4 x 1 1/4" Fuse Holders

Part Number	Voltage Range	Fuse	Description	End Plate
1014100000	10-36V DC/AC	1/4 x 1-1/4"	WSI 6/2/LD	1050000000
1014300001	60-150VDC/AC			
1014400001	250AC		WSI 6/2	
1014000000	NA			
1880410000	10-36V AC/DC		WSI 4/2/LD	1880450000
1880420000	60-150V			



Class CC Fuse Holders



Part Number	Poles	Indicator
1966050000	1	No
1966070000		Yes
1966040000	2	No
1444210000		Yes
1966030000	3	No
1444220000		Yes



Breaker busbars are compatible with Weidmuller CC fuse holders. Use the bottom feeder terminal.

24VDC Power Supply Selection Guide

Consider the following:

Explosion proof PLC Communications
Power supply redundancy

If these do not apply, go with the ProEco Series

If any of these apply, go with Weidmuller's ProTop series

Select the input voltage

Single phase 100-240V AC

Three phase 400-500V AC



ProEco 1



ProEco 3

Select the input voltage

Single phase 100-240V AC

Three phase 400-500V AC



ProTop 1



ProTop 3

Select the output amperage

Select the output amperage

ProEco 1	
Amperage	Part number
3	1469470000
5	1469480000
10	1469490000
20	1469510000
40	1469520000

Single Phase Input

ProEco 3	
Amperage	Part number
5	1469530000
10	1469540000
20	1469550000
40	1469560000

Three Phase Input

ProTop 1	
Amperage	Part number
3	2466850000
5	2466870000
10	2466880000
20	2466890000
40	2466900000

Single Phase Input

ProTop 3	
Amperage	Part number
5	2467060000
10	2467080000
20	2467100000
40	2467120000

Three Phase Input

We also carry power supplies at the following voltages: 48V, 12V, and 5V

Networking Selection Guide

Network Switches

Part Number	Type	Ports	Description
7940098712	Unmanaged	5 x RJ45	5 Port Unmanaged Network Switch
2682140000		8 x RJ45	8 Port Unmanaged Network Switch
2682150000		16 x RJ45	16 Port Unmanaged Network Switch
1240940000	Managed	8 x RJ45	8 Port Managed Network Switch
1241100000		16 x RJ45	16 Port Managed Network Switch



Remote Network Gateway Units

Part Number	Description
EC71330	Cosy+ Wired Ethernet WAN
EC7133J	Cosy+ WiFi
EC6133H	Cosy+ Cellular 4G NA
FLEXY20500	FLeXY IIOT Router
FLB3271	Flexy WiFi Extension Module
FLB3208	Flexy Cellular 4G NA Extension Module
FAC91201_0000	4G Bracket Antenna With 5M Cable for 4G Ewon Devices (Required for 4G Models)



Distributed IO Selection Guide

Fieldbus Couplers

Part number	Description
2799510000	Ethernet, EtherNet/IP ECO
1550550000	Ethernet, EtherNet/IP V2
2659700000	Modbus/TCP ECO
2659680000	PROFINET RT ECO
2566380000	PROFINET RT V2

ECO Couplers can take 16 cards. Regular Couplers can take 64 cards.



Backplane Power Feed Modules

Part number	Description
1334710000	Power supply unit, 24 VDC-Input
1334740000	Power supply unit, 24 VDC-Output



IO Modules

Discrete IO

Part number	IO Type	IO Count	Description
1315200000	Discrete In	16	Digital, Input, 16-channel
1315180000		8	Digital, Input, 8-channel, 2-conductor
1315170000		4	Digital, Input, 4-channel
1315250000	Discrete Out	16	Digital, Output, 16-channel
1315240000		8	Digital, Output, 8-channel
1315220000		4	Digital, Output, 4-channel
1315550000	Relay Out	4	Digital, Output, Relay, 4-channel



Analog IO

Part number	IO Type	IO Count	Description
1315620000	Analog in	4	Analog, Input, 4-channel, 16 Bit
1315700000		4	Analog, Input, Temperature, RTD
1315680000	Analog out	4	Analog, Output, 4-channel



Machine PLC Selection Guide

M221 PLC

Part Number	IO Count	Output Type	Supply
TM221CE16T	16	Transistor	24 VDC
TM221CE16R	(9 in, 7 out)	Relay	120 VAC
TM221CE24T	24	Transistor	24 VDC
TM221CE24R	(14in, 10 out)	Relay	120 VAC
TM221CE40T	40	Transistor	24 VDC
TM221CE40R	(24in, 16out)	Relay	120 VAC



Configuration software [Machine Expert Basic](#) is free for download

M241 PLC

Part Number	Input	Output	Supply
TM241CE24T	14 Discrete (8 fast)	10 Transistor (4 fast)	24 VDC
TM241CE24R	14 Discrete (8 fast)	6 Relay, 4 Transistor (fast)	120 VAC
TM241CE40T	24 Discrete (8 fast)	16 Transistor (4 fast)	24 VDC
TM241CE40R	24 Discrete (8 fast)	12 Relay, 4 Transistor (fast)	120 VAC

Configuration software: [Machine Expert](#). It is paid software.



TM3 Expandable Modules



Part Number	IO Type	I/O Count
TM3DI16	Discrete In	16
TM3DQ16T	Discrete Out	16 Transistor
TM3AI4	Analog In	4
TM3AQ4	Analog Out	
TM3TI4	Temperature	4 Temperature
TM3XHSC202	Counter	10 In / 8 Out
TM3SAF5R	Safety Module	NA



Maximum of 7 cards

TMC Modules for the M241 PLC

Part Number	Input	Output
TMC4AI2	2 Analog	NA
TMC4AQ2	NA	2 Analog
TMC4TI2	2 Temperature	NA



Panel Components Selection Guide

Heavy Duty Connector Kits

Part Number	Poles	Description
1712530000	24	Side Entry Heavy Duty Connector Kit
1712520000	16	



Power Distribution Blocks



Part Number	Line	Load	Amps
1879420000	1 Pole 350 - #6 / or 2/0 - #14	8 Poles #2 - #14	310A
1879480000	1 Pole 2/0 - #14	4 Poles #2 - #14	175A



Part Number	Description
1879490000	Accessory pin for fixing multi-pole block assemblies

Panel Mount Interface Connector



Part Number	Description
1018790000	Micro RJ45 coupling
1427960000	Micro USB coupling, USB 3.0, Type A



DIN-Rail Mount AC Receptacle

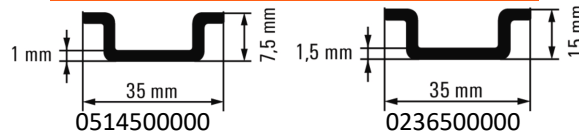
Part Number	Description
6720005430	Duplex 15A, 120VAC Outlet with LED - SCCR 10kA



Cabinet Infrastructure Selection Guide

DIN Rail

Part Number	Description
0514500000	Standard 35x7.5 Din Rail
0236500000	Deep 35x15 Din Rail



Part Number	Description
0164000000	Tilted Mounting Rail Support



LED Panel Lights

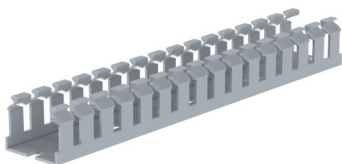
Part Number		Switching
110-240 VAC Model	24-48 VDC Model	
7L.43.0.230.0100		Direct Switching
7L.43.0.230.1100	7L.43.0.024.1100	On/Off Switch
7L.43.0.230.2100	7L.43.0.024.2100	Motion Detector



Part Number	Description
07L.12	Plug, for daisy chain connection

Wiring Duct and Covers

Part Number	Width (in)	Height (in)	Description
F1X1LG6	1	1	Narrow Slot Base Wiring Duct
F1X2LG6		2	
C1LG6	1.5	NA	Flush Duct Cover
F1.5X3LG6		3	Narrow Slot Base Wiring Duct
C1.5LG6	2	NA	Flush Duct Cover
F2X2LG6		2	Narrow Slot Base Wiring Duct
F2X4LG6	4		
C2LG6	4	NA	Flush Duct Cover
F4X4LG6		4	Narrow Slot Base Wiring Duct
C4LG6		NA	Flush Duct Cover



TEW Control Wire Selection Guide

TEW Control Wire

Part Number	Gauge	Colour	Reel Qty
TEW1816BLUX(150 or 300)	18	Blue	152m/305m
TEW1826BLUWHTX(150 or 300)		Blue/White	
TEW1816GRNX(150 or 300)		Green	
TEW1816REDX(150 or 300)		Red	
TEW1816WHTX(150 or 300)		White	
TEW1816BLKX(150 or 300)		Black	
TEW1626BLUX(150 or 300)	16	Blue	
TEW1626BLUWHTX(150 or 300)		Blue/White	
TEW1626GRNX(150 or 300)		Green	
TEW1626REDX(150 or 300)		Red	
TEW1626WHTX(150 or 300)		White	
TEW1626BLKX(150 or 300)		Black	
TEW1441BLUX(150 or 300)	14	Blue	305m
TEW1441BLUWHTX300		Blue/White	
TEW1441GRNX300		Green	
TEW1441REDX300		Red	
TEW1441WHTX300		White	
TEW1441BLKX300		Black	
TEW1265BLUX300	12	Blue	
TEW1265BLUWHTX300		Blue/White	
TEW10105BLUX300	10	Blue	

MTW - TEW - AWM UL 1015, UL 1032, UL 1230 CSA 22.2 No. 127

